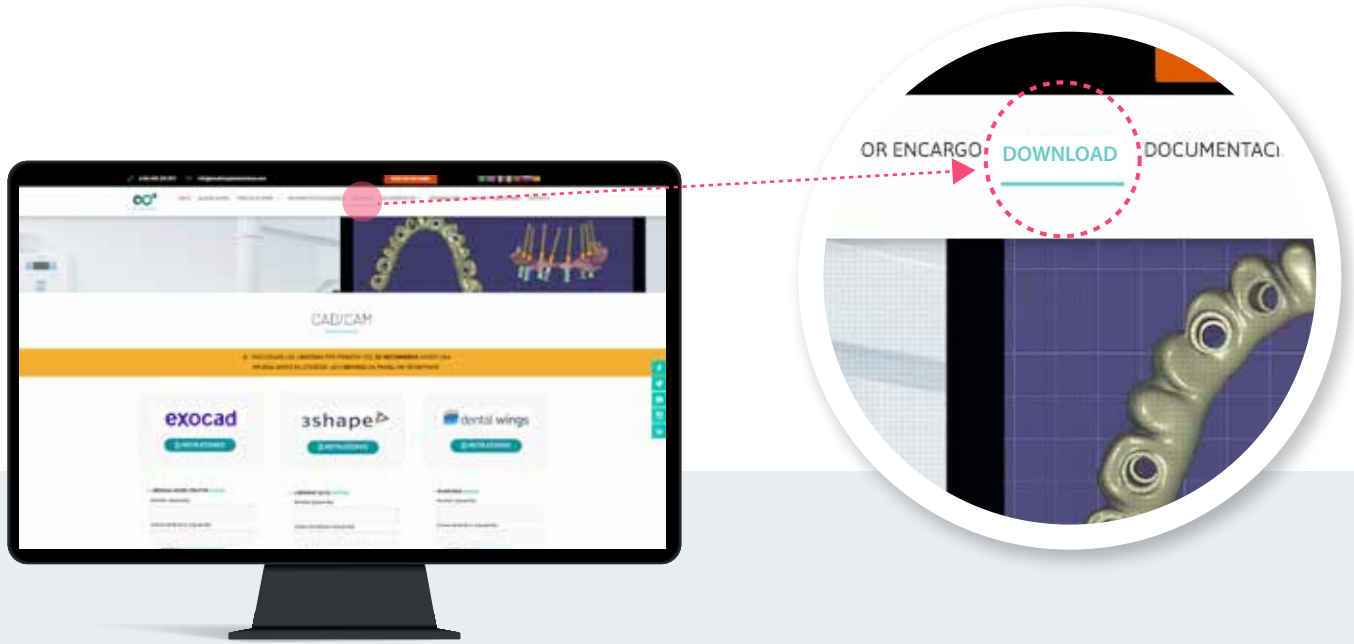




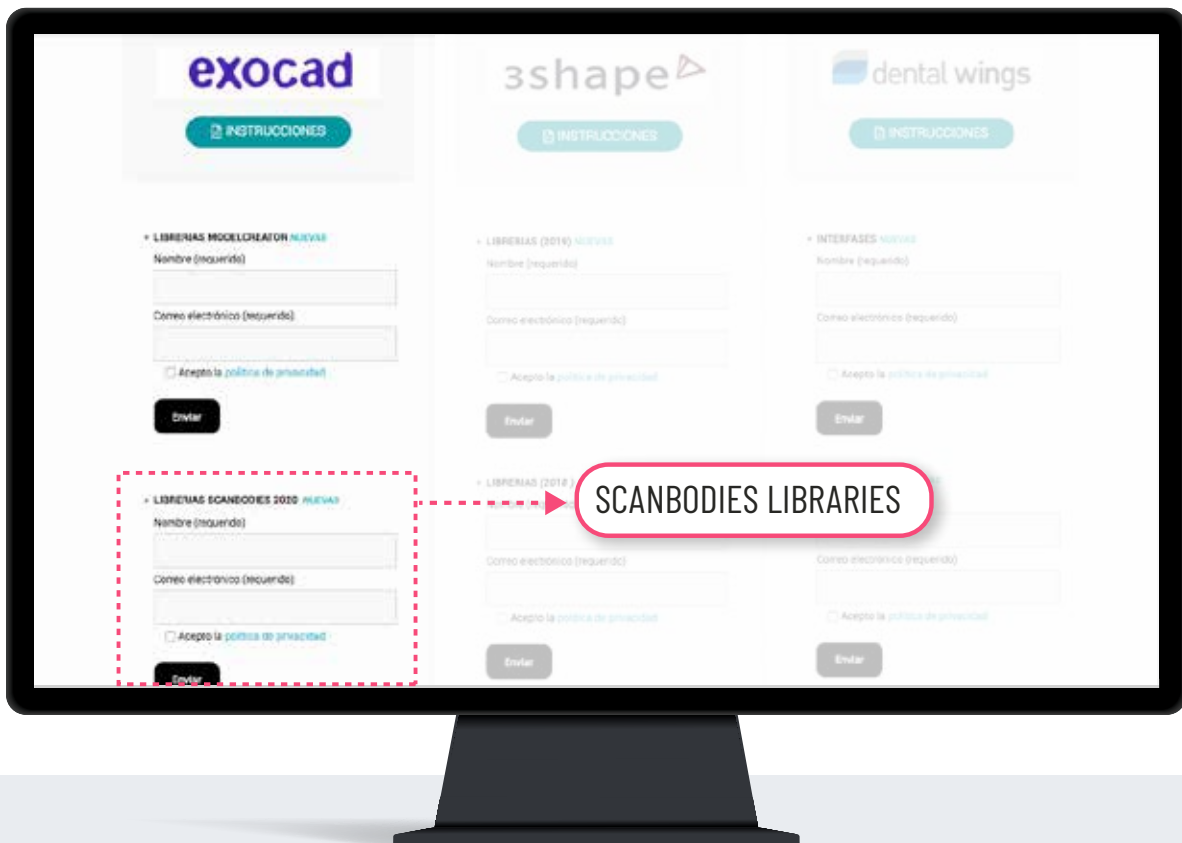
INSTRUCTIONS

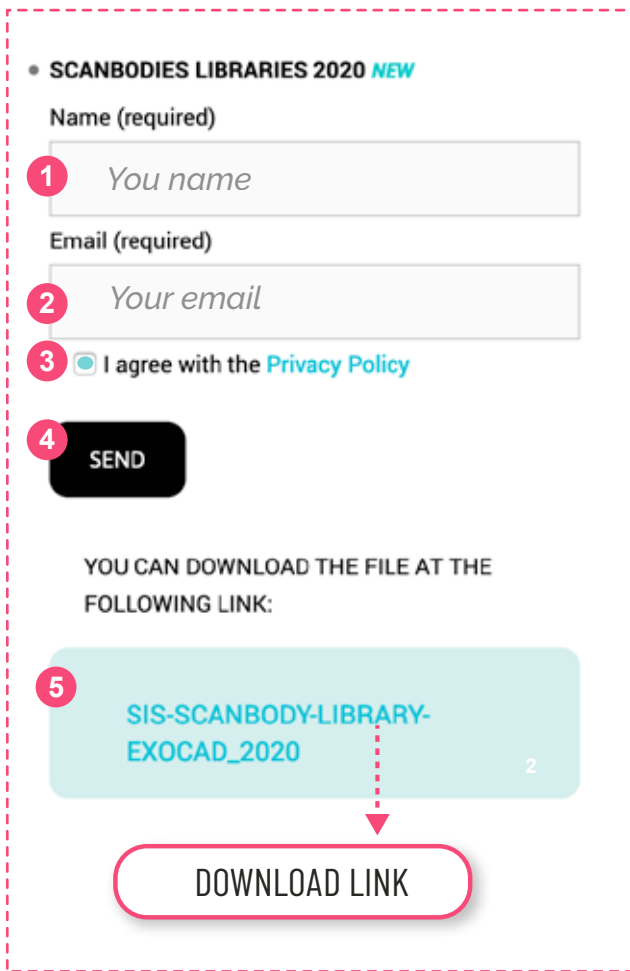
DOWNLOAD SCANBODIES LIBRARIES INTO EXOCAD SOFTWARE	2
INSTALL SCANBODIES LIBRARIES INTO EXOCAD SOFTWARE	4
INSTRUCTIONS FOR Ti BASE AND CoCr BASE WORK	7

1. DOWNLOAD SCANBODIES LIBRARIES



1. From a computer, connect to: www.smartimplantsolutions.com
2. From a computer, connect to: **DOWNLOAD**.





• SCANBODIES LIBRARIES 2020 **NEW**

Name (required)

1 You name

Email (required)

2 Your email

3 I agree with the [Privacy Policy](#)

4 **SEND**

YOU CAN DOWNLOAD THE FILE AT THE FOLLOWING LINK:

5 SIS-SCANBODY-LIBRARY-EXOCAD_2020

DOWNLOAD LINK

FILL THE LIBRARY FORM FIELDS

1. Enter your name.
2. Enter your email.
3. Accept the privacy policy.
4. Press the **SEND** button.

Once the form has been submitted, the link to download the library is displayed

5. Click on the link: **SIS-SCANBODY**
6. The file will be downloaded in the Downloads folder of your PC

2. INSTALL SCANBODIES LIBRARIES

1 UNZIP THE FILE .ZIP

1. Go to the **Downloads folder** on your PC
2. Unzip the file you will get a folder called **"SIS-SCANBODY-LIBRARY-EXOCAD_2020.zip"**.

To unzip the file you can use a standard zip file decomposition program downloaded from the internet such as WinZip or WinRar.

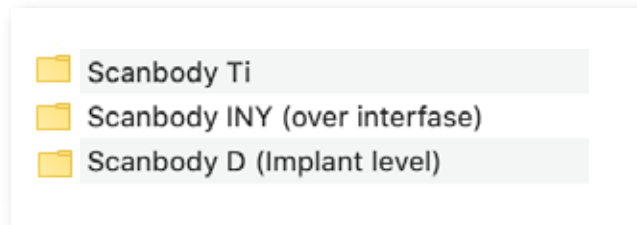


WinZip



WinRar

- 2 When you unzip the file you will get a folder called "SIS-SCANBODY-LIBRARY-EXOCAD_2020" that contains:



SCANBODY Ti LIBRARIES



SCANBODY Ti

Libraries for Ti base, CrCo base (overcastable) and digital analog, from intraoral or desktop scanning..

SCANBODY D (Implant Level)

Libraries for titanium scanbodies. They are used for implant direct work over digital analog, from intraoral or desktop scanning



SCANBODY INY (Over Interfase)

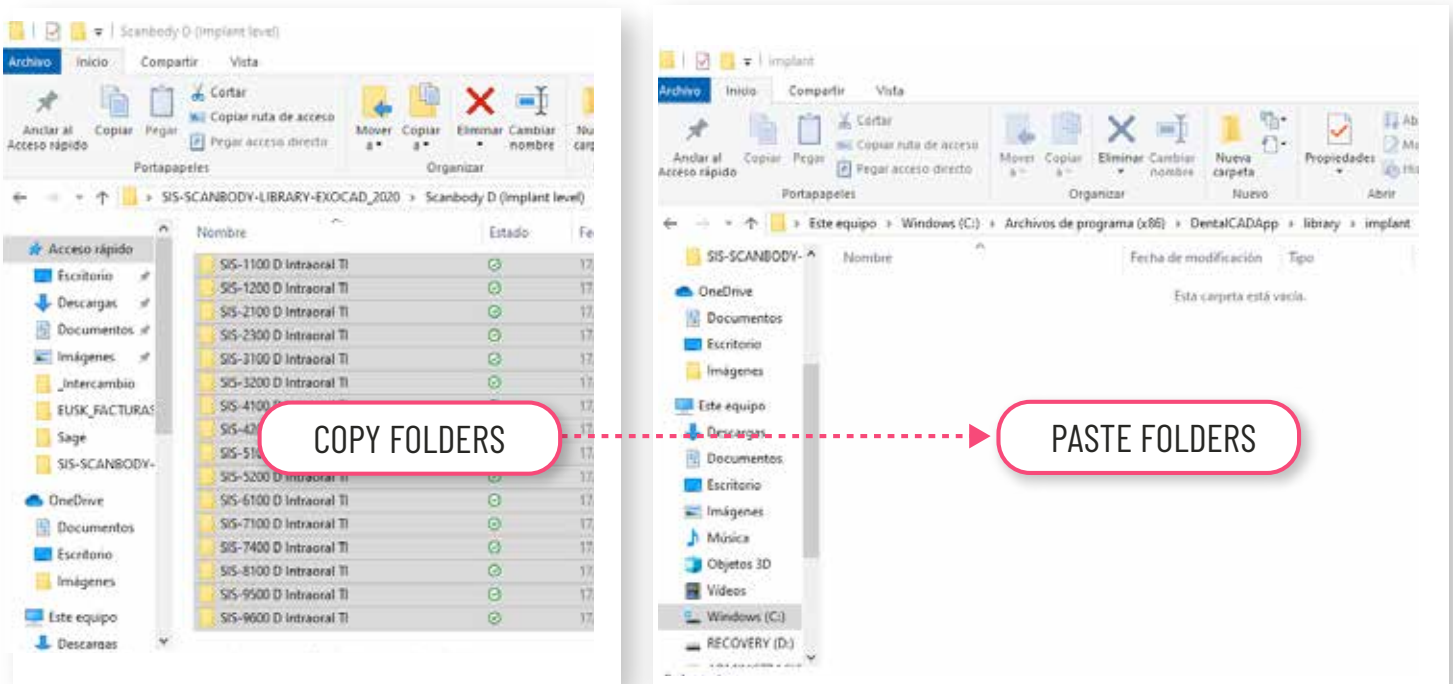
Libraries to work with free scanbody that comes with every Ti base. It allows you to work with Ti base or CrCo base. You have to scan always with standard height Ti base (the lowest one). If you want to choose different gingival or cementation heights, you have to select them inside ExoCAD program.

3 COPY FOLDERS

Copy the folders or folders from the Libraries that interest you..

Example:

1. Open the Scanbody D (implant level) folder.
2. Select and copy all folders.
3. Paste them into the following patha **C:/exocad/DentalCADApp/library/implant/**.



SHORTCUT: Using file manager of your computer, you can find required path very quickly.

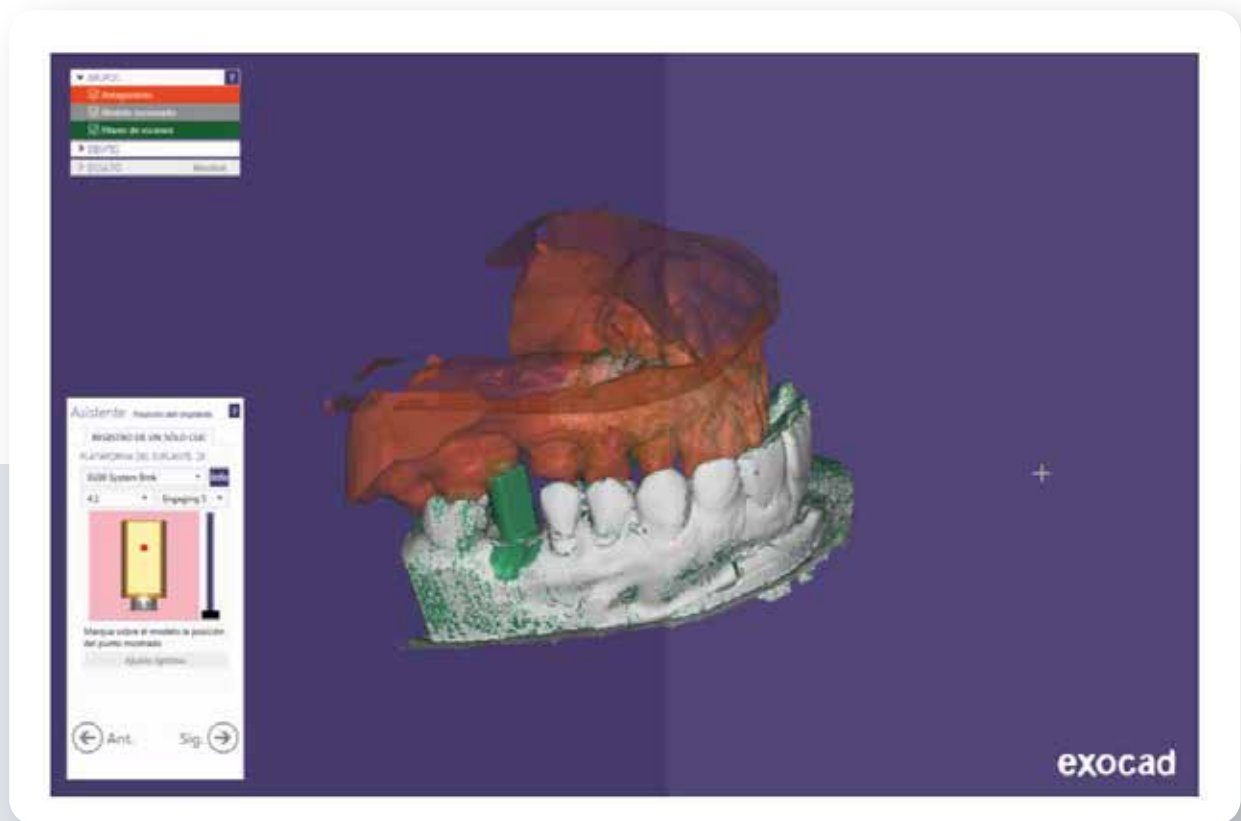
C:/exocad/DentalCADApp/library/implant/

4 CHECK

Make sure you have the libraries correctly copied in the Exocad library menu. Go into **implant** folder and be sure that files are copied

1 EXECUTE EXOCAD

Execute Exocad and choose the SIS interface.



1 Location of implants and connections in libraries.

SIS-0100: Nobel Biocare® Branemark®
SIS-0120: BTI® Hexágono externo
SIS-0200: Biomet 3i® Osseotite®
SIS-0300: Zimmer® Screw-vent®
SIS-0400: Biomet 3i® Certain®
SIS-0500: Astra® Tech Osseospeed®
SIS-0600: Straumann® Tissue Level®
SIS-0700: BTI® Tetralobular
SIS-0800: Nobel Biocare® Replace Select®
SIS-0900: Nobel Biocare® Nobelactive®
SIS-1000: Klockner® Sk2®
SIS-1100: Straumann® Bone Level®
SIS-1300: Multi-Unit
SIS-1400: Sweden & Martina® Premium Kohno®
SIS-1500: Phibo® Tsh®
SIS-1600: Mis Seven®
SIS-1900: Klockner® essential®
SIS-2200: Neobiotech® Is System
SIS-2300: Astra® Tech System Evolution
SIS-2400: Neodent GM®
SIS-2500: Megagen Anyridge®
SIS-2600: Denstply® Xive®
SIS-2700: Denstply® Ankylos®
SIS-2800: Osstem® TS/ Hiossen® ET
SIS-2900: Dio® UFII®
SIS-3000: Dentium Superline & Implantium®

When choosing our implant, it will appear a dropdown menu with different options.

- 2 Once library is chosen, **select the desired platform.**
- 3 Later, **choose** if you want to work **over Ti base or CrCo base.**
If you **select Ti base option** and you want to use a **different height, cement o gingival, choose** desired option:



HG2: gingival height 2mm.



HG3:gingival height 3 mm.



HC7: gingival height 7mm.

- 4 When you choose the abutment, you can select option:
E (Engaging = Antirrotatorio) o NE (Non-Engaging = Rotatorio).
- 5 In any option you can select **different frictions** (space for cement): **S, N or B.**

S: Small (less space for cement, more friction).

N: Normal (standard space for cement).

B: Big (more space for cement, less friction)

Select the option you prefer.