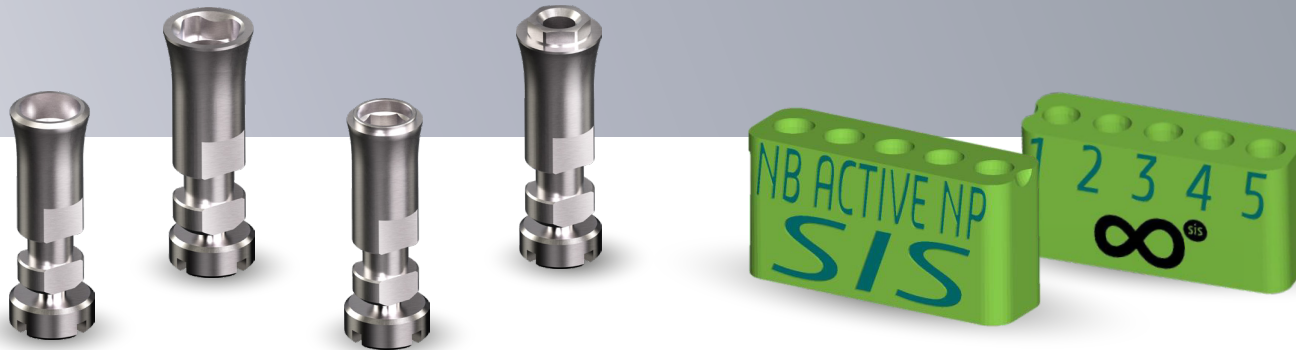




Smart Implant Solutions

SIS DIGITAL ANALOG PROCEDURE

1. SIS digital analog calibration
2. Step by Step



PROCEDURE

1. SIS digital analog

PREVIOUS:

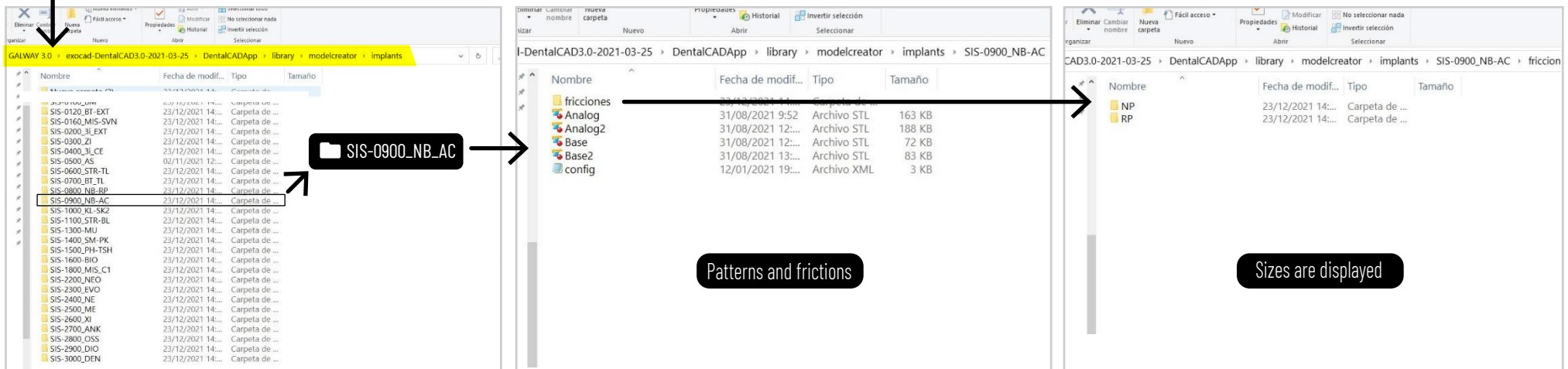
In each **Modelcreator library** you will find a folder called **“Patrones fricciones”**.

Within this folder you will have **several folders depending on the sizes** of each Implant system.

Example:

1 Copy digital analog libraries to path:

GALWAY 3.0 > exocad-DentalCAD3.0-2021-03-25 > DentalCADApp > library > modelcreator > implants



2 Within each folder **patterns** and **frictions** are displayed.

3 Within the **“Fricciones”** folder, the available sizes are displayed.

PROCEDURE

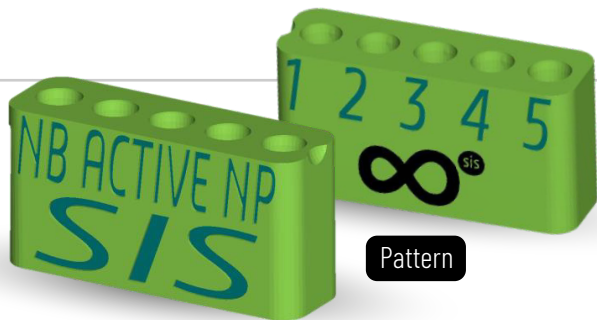
1. SIS digital analog

... implants > SIS-0900_NB-AC > fricciones > NP

| Nombre | Fecha de modif... | Tipo | Tamaño |
|--------|-------------------|----------------|--------|
| 1 | 31/08/2021 11:... | Carpeta de ... | |
| 2 | 31/08/2021 11:... | Carpeta de ... | |
| 3 | 31/08/2021 11:... | Carpeta de ... | |
| 4 | 31/08/2021 11:... | Carpeta de ... | |
| 5 | 31/08/2021 11:... | Carpeta de ... | |
| Patron | 31/08/2021 12:... | Archivo STL | 748 KB |

4 The "fricciones" folder contains:

- 5 subfolders with the 5 frictions.
- The **pattern** of your system.



| Nombre | Fecha de modif... | Tipo | Tamaño |
|--------|-------------------|-------------|--------|
| Base | 31/08/2021 12:... | Archivo STL | 72 KB |

5 Each **subfolder** contains:

- The **file** with each **friction**.

... implants > SIS-0900_NB-AC > Fricciones > NP > 3

PROCEDURE

2. Step by Step

1 Select the print pattern.



2 Print with the resin for models at the usual resolution.



4 Try the analog in all frictions and **choose** the friction.



3 Wash and **Cure** as usual.

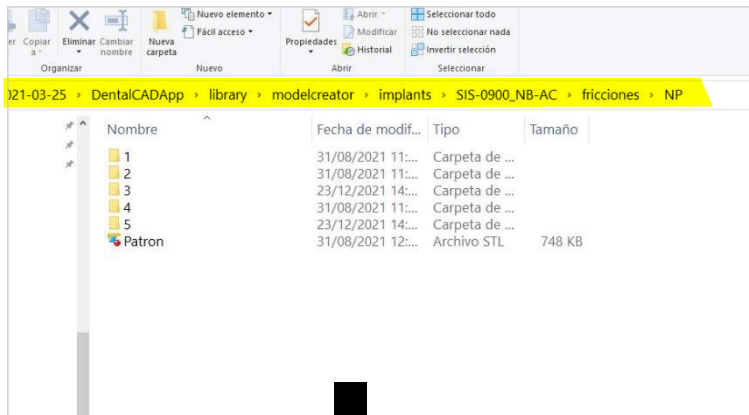


PROCEDURE

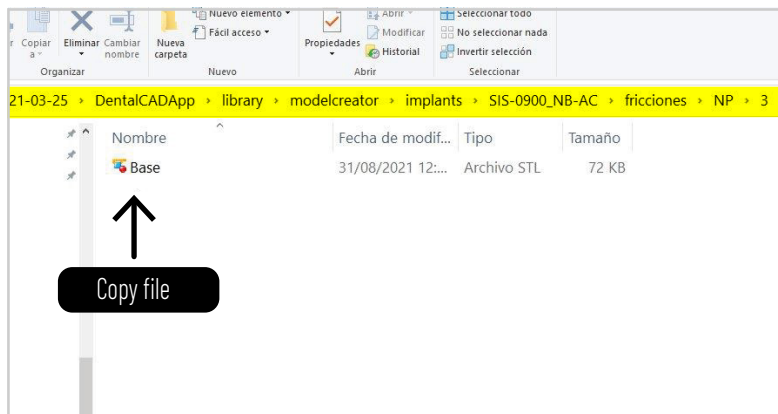
2. Step by Step

5 Go to the **subfolder** and **copy** the file.

... implants > SIS-0900_NB-AC > Fricciones > NP



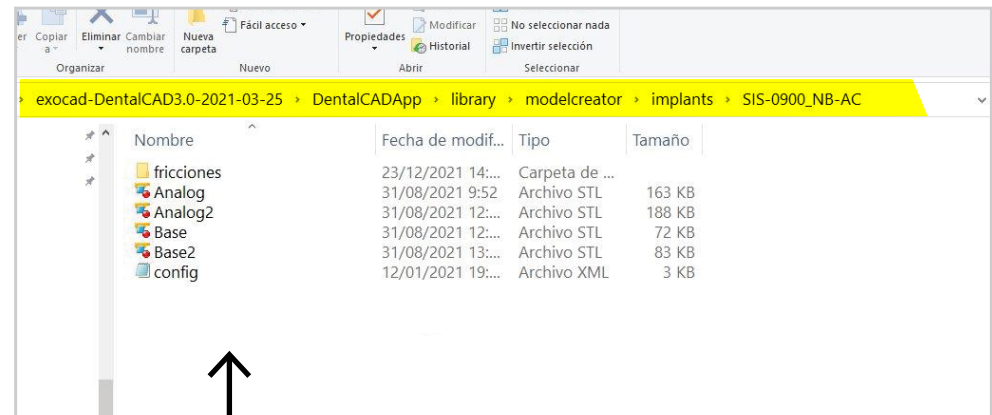
... implants > SIS-0900_NB-AC > Fricciones > NP > 3



Copy file

6 Finally, go to the **root folder** of the library and **paste the file**.

... implants > SIS-0900_NB-AC



Paste file

The file will be replaced automatically.

Your library is ready to be used with the chosen friction.
Don't forget to **restart the software**.



www.smartimplantsolutions.com